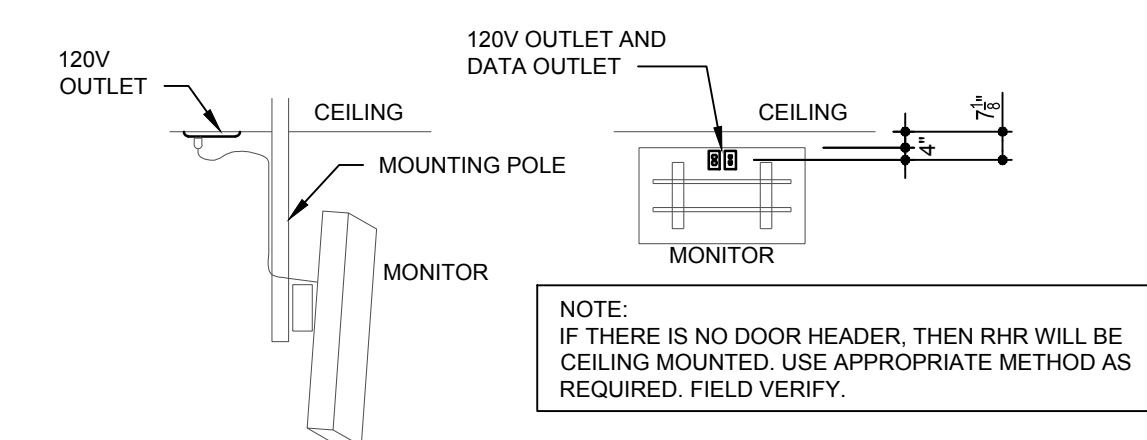


NOTE:  
STATIC QUEUING BOARDS TO BE HARD WIRED. G.C. TO PROVIDE J-BOX ABOVE CEILING CENTERED BETWEEN BOARDS.

### 3 MAIN MENUBOARD ROUGH-IN ELEVATION

NOT TO SCALE



### 2 REDHEAD ROASTER (RHR) POWER MONITOR SCHEMATIC

NOT TO SCALE

### ELECTRICAL LEGEND

- ⊕ JUNCTION BOX
- ⊕ \* = A-H AS COOKLINE JUNCTION BOXES REFER TO DETAIL #3 ON SHEET E4.2
- ⊕ 20 AMP 120V-1PH SIMPLEX RECEPTACLE +16\"/>
- ⊕ 20 AMP 120V-1PH DUPLEX RECEPTACLE +16\"/>
- GFI 20 AMP 120V-1PH GROUND FAULT INTERRUPTING RECEPTACLE
- WP 20 AMP 120V-1PH WEATHERPROOF RECEPTACLE
- R 20 AMP 120V-1PH RECESSED RECEPTACLE
- ⊕ 120V-1PH QUADRUPLX RECEPTACLE
- ⊕ 20 AMP 120V-1PH HUBBELL #USB20X2BK RECEPTACLE
- ⊕ 20 AMP QUADRUPLX 120V-1PH HUBBELL # USB20X2W (QTY 2)
- ⊕ 20 AMP 120V-1PH HUBBELL #IG5362 ISOLATED GROUND RECEPTACLE
- ⊕ 20 AMP QUAD HUBBELL #IG5362 (QTY 2) ISOLATED GROUND RECEPTACLE
- ⊕ SPECIAL RECEPTACLE. SEE KITCHEN EQUIPMENT SCHEDULE
- ⊕ DISCONNECT SWITCH BY ELECTRICAL CONTRACTOR
- ⊕ DISCONNECT SWITCH SUPPLIED WITH EQUIPMENT
- ⊕ TELEPHONE CONNECTION
- ⊕ TELEPHONE/DATA CONNECTION
- ⊕ DATA CONNECTION
- ⊕ RT REMOTE TEST STATION (54\")
- ⊕ PARTIAL CIRCUIT
- ⊕ HOME RUN TO PANEL. CIRCUIT NUMBERS, PHASE, NEUTRAL & GROUND CONDUCTORS INDICATED ALONG WITH ISOLATED GROUND CONDUCTOR IF APPLICABLE.
- ⊕ THERMOSTAT, TEMPERATURE SENSOR AND HUMIDISTAT BY MECHANICAL CONTRACTOR

### EQUIPMENT & CONNECTIONS

CIRCUIT NUMBER	DESCRIPTION	LOAD				VOLTAGE		CONNECTIONS		FEEDER		NOTES	
		HORSEPOWER	KILOWATTS	120V-1PH	208V-3PH	120/208V-1PH	TYPE	PLUG GORD FURNISHED	CONDUCTORS :	WIRE SIZE	GROUND SIZE		CONDUIT SIZE
(E)	DRIVE THRU FREESTYLE	.7	0				EXIST. RECEPTACLE	ES	2	12	12	3/4"	EXISTING
-	POS MONITOR/TERMINAL	.3	0				RECEPTACLE	(E)					
-	POS MONITOR/TERMINAL	.3	0				RECEPTACLE	(E)					
-	BEVERAGE DISPENSER	.4	0				RECEPTACLE	ES	2	12	12	3/4"	EXISTING
-	-	-	0				-	-	-	-	-	-	-
-	MENUBOARD	1.5	0				DIRECT	EC	2	12	12	3/4"	
-	REDHEAD ROASTER	.5	0				DIRECT	EC	2	12	12	3/4"	
(E)	D.T. ICE MAKER	2.5	0				WP DISC SWITCH @ UNIT	ES	3	10	10	3/4"	VERIFY FOR REUSE
(E)	BEVERAGE DISPENSER	1.4	0				RECEPTACLE	ES	2	12	12	3/4"	
(E)	BEVERAGE ICE MAKER	2.5	0				WP DISC SWITCH @ UNIT	ES	3	10	10		
-	DOUBLE SIDED GRILL	15.9		0			RECEPTACLE NEMA 15-50	EC	3	6	10	1-1/2"	
-	DOUBLE SIDED GRILL	12.8		0			RECEPTACLE NEMA 15-50	EC	3	6	10	1-1/2"	

ES /EQUIPMENT SUPPLIER  
EC /ELECTRICAL CONTRACTOR  
-- CONDUCTOR QUANTITY DOES NOT INCLUDE GROUND WIRE

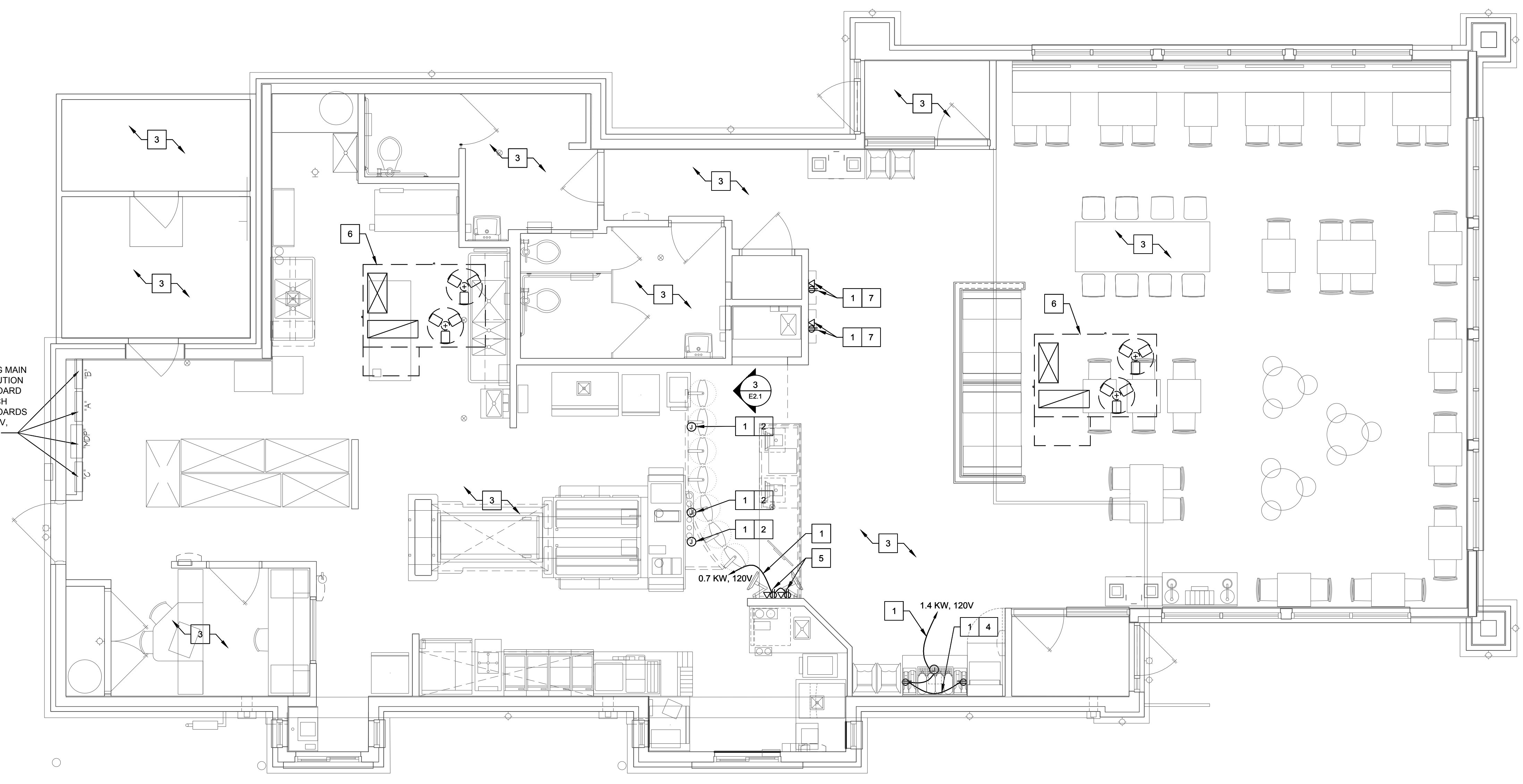
### GENERAL NOTES

- A. REFER TO "WIRING AND SITE PREPARATION GUIDE" AS PREPARED BY "WENDY'S INTERNATIONAL" "INFORMATION SYSTEMS DEPARTMENT" FOR INSTALLATION OF POINT OF SALE CASH REGISTER SYSTEM.
- B. ELECTRICAL CONTRACTOR TO COORDINATE WORK WITH MECHANICAL, REFRIGERATION AND EQUIPMENT CONTRACTORS, INCLUDING COOLER/FREEZER WORK. (IF APPLICABLE)
- C. ELECTRICAL CONTRACTOR TO VERIFY ALL ROUGH-IN DIMENSIONS AND POWER REQUIREMENTS WITH KITCHEN EQUIPMENT DISTRIBUTOR PRIOR TO ROUGH-IN.
- D. ELECTRICAL CONTRACTOR TO HOOK UP FIELD CONNECTIONS WITHIN FRONT COUNTER, AND ICE MACHINE REMOTE UNIT (ON ROOF) AT TIME OF INSTALLATION.
- E. HEIGHTS INDICATED FOR RECEPTACLES AND JUNCTION BOXES ARE MEASURED FROM FINISH FLOOR TO THE CENTER OF THE BOX UNLESS OTHERWISE NOTED.
- F. ELECTRICAL CONTRACTOR IS RESPONSIBLE FOR INSTALLING ALL TELEPHONE LINES AND TERMINATIONS. VERIFY QUANTITY AND LOCATIONS WITH OWNER PRIOR TO BIDDING.
- G. ALL CIRCUITS MAY BE CORRECTED TO THE LEAST AMOUNT OF CONDUIT RUN UNLESS OTHERWISE NOTED.
- H. ALL COVER PLATES TO BE SATIN FINISH STAINLESS STEEL THROUGHOUT UNLESS OTHERWISE NOTED.
- I. ALL NEW 120V RECEPTACLES IN KITCHEN TO HAVE GROUND-FAULT CIRCUIT INTERRUPTER PROTECTION. OTHER GFIS SHOWN SEPARATELY.
- J. FOR THE IBM POINT OF SALE REGISTER SYSTEM ONLY: ALTERNATE P.O.S. SUPPLIERS MUST CONFORM TO THE REGISTER LAYOUT OR PROVIDE THE OWNER AND/OR GENERAL CONTRACTOR WITH WIRING DIAGRAMS AND INSTALLATION DETAILS BEFORE THE ELECTRICAL CONTRACTOR STARTS ANY WORK.
- K. ALL CONDUITS SHOULD BE STEEL FLEX OR PLASTIC STUBBED OUT ABOVE THE CEILING LINE AND TERMINATED INTO A J-BOX AS NOTED AND CAPABLE OF ACCEPTING A FACEPLATE COVER.
- L. ALL J-BOXES SHOULD BE INSTALLED IN SUCH A WAY THAT THEY ARE NOT BLOCKED BY OTHER EQUIPMENT OR STRUCTURAL COMPONENTS.
- M. ALL IG OUTLETS (HUBBELL IG5362 - ORANGE OR EQUAL) MUST BE CLEARLY LABELED.
- N. ALL CABLE ACCESS OPENINGS THRU S/S MUST HAVE RUBBER OR PLASTIC GROMMETS INSTALLED.
- O. THE ELECTRIC SERVICE FOR THE GFI OUTLET/SCOREBOARD MUST BE ON A SEPARATE BREAKER (NOT CONNECTED TO THE MENU BOARD OR OUTSIDE LIGHT FEED).
- P. HEIGHTS INDICATED FOR RECEPTACLES AND J-BOXES ARE MEASURED FROM FINISH FLOOR TO THE CENTER OF BOX. U.N.O.
- Q. EXISTING ENERGY MANAGEMENT SYSTEM TO REMAIN AND BE FULLY OPERATIONAL AT COMPLETION OF REMODEL.
- R. ALL CUSTOMER ACCESSIBLE RECEPTACLES MUST BE TAMPER RESISTANT.

### X CODED NOTES:

1. CIRCUIT TO EXISTING 20A, 120V, SPARE CIRCUIT BREAKER AS INDICATED ON PLANS IN EXISTING PANELBOARD (FIELD VERIFY). VERIFY THAT THE ADDITIONAL LOAD DOES NOT OVERLOAD EXISTING PANELBOARD OR ANY UPSTREAM ELECTRICAL DEVICE.
2. PROVIDE POWER AND DATA FOR STATIC MENUBOARDS. PROVIDE CIRCUITING TO MENU BOARDS IN SERVING AREA VIA LIGHTING CONTACTOR. DESIGN INTENT IS FOR MENU BOARDS TO BE CONTROLLED ON AND OFF WITH GENERAL LIGHTING IN THIS AREA.
3. ALL EXISTING ELECTRICAL DEVICES, CONDUIT, WIRING, AND EQUIPMENT IN THIS AREA AND ON ROOF TO REMAIN, UNLESS NOTED OTHERWISE. MAINTAIN AND PROTET EXISTING BRANCH CIRCUITS.
4. RELOCATE EXISTING FREESTYLE MACHINES AND RECEPTACLES (AS REQUIRED) AND ATTACH BACK TO EXISTING CIRCUIT SERVING CONVENIENCE RECEPTACLE. COORDINATE ELECTRICAL REQUIREMENTS WITH MECHANICAL CONTRACTOR PRIOR TO INSTALLATION. PROVIDE HOME RUNS AND JUNCTION BOX IN CEILING SPACE AND MAKE FINAL CONNECTIONS.
5. PROVIDE CEILING MOUNTED DUPLEX RECEPTACLE AND DATA FOR DIGITAL RHR MONITOR. SEE RHR POWER MONITOR SCHEMATIC DETAIL ON THIS SHEET.
6. ENSURE THAT THE EXISTING DISCONNECT SWITCH, CONDUCTORS AND CIRCUIT BREAKER SERVING RTU IS RATED FOR NEW RTU ELECTRICAL REQUIREMENTS. RECONNECT CONVENIENCE RECEPTACLE TO EXISTING CIRCUIT SERVING CONVENIENCE RECEPTACLE. COORDINATE ELECTRICAL REQUIREMENTS WITH MECHANICAL CONTRACTOR PRIOR TO INSTALLATION. PROVIDE NEW CIRCUIT BREAKER, CONDUCTORS AND LOCAL DISCONNECT IF REQUIRED.
7. PROVIDE POWER AND DATA FOR QUEUING BOARDS. PROVIDE CIRCUITING TO QUEUING BOARDS IN SERVING AREA VIA LIGHTING CONTACTOR. DESIGN INTENT IS FOR QUEUING BOARDS TO BE CONTROLLED ON AND OFF WITH GENERAL LIGHTING IN THIS AREA.

EXISTING MAIN DISTRIBUTION PANELBOARD & BRANCH PANELBOARDS 208Y/120V, 3PH, 4W.



### 1 POWER PLAN

SCALE: 1/4" = 1'-0"

SITE NUMBER: 09718  
BUILDING TYPE: E2000  
ASSET TYPE: FREESTANDING  
CLASSIFICATION: REFRESH LT  
OWNER: WEND AMERICAN GROUP  
BASE VERSION: 2020 SUMMER  
UPGRADE CLASSIFICATION:  
PROJECT YEAR: 2021  
DESIGN TYPE: (2.0) UM BRIGHT  
DRAWING RELEASE: SUMMER 2020

CONTRACTOR SHALL VERIFY ALL DIMENSIONS AT THE JOB SITE AND NOTIFY THE ARCHITECTS OF ANY DIMENSIONAL ERRORS, OMISSIONS OR DISCREPANCIES BEFORE BEGINNING OR FABRICATING ANY WORK  
DO NOT SCALE DRAWINGS

MEP Engineer of Record  
Brian J. Timmons, P.E.  
14817 West 95th Street  
P 913 322 5150 F 913 322 5155  
Lenexa, Kansas 66215  
Proj# 212.0149

PROJECT TYPE: E2000  
REFRESH LT

**Wendy's**  
# 09718 (FLYNN # 6060)  
10989 NO TOWN CENTER BLVD  
HIGHLAND, UT 84003

REV. DATE DESCRIPTION  
\_\_\_\_\_  
\_\_\_\_\_  
\_\_\_\_\_  
ISSUE DATE: 06/03/2021  
PROJECT NUMBER: 21-41  
DRAWN BY: CW/CS  
CHECKED BY: CE/AR

SEAL  
PROFESSIONAL ENGINEER  
BRIAN J. TIMMONS  
No. 48999-000202  
STATE OF UTAH  
06/03/21

SHEET NAME  
POWER PLAN  
SHEET NUMBER  
E2.1

06/2021, 6:09 PM, C:\Wendy's - Flynn\2120149\Wendy's - Flynn\2120149\Power Plan.dwg, c:\wendy's