

6/22/2021 3:50 PM C:\Users\mbrundige\OneDrive - Public\Wendy's\2021\11 Flynn\0606-0718 Highland UT (Remodel)\Construction Documents\EQ1 - Equipment Plan.dwg mbrundige

**SYMBOL LEGEND**

SYMBOL	DESCRIPTION
(X###)	EQUIPMENT TAGS
(X###)	EQUIPMENT TAGS
(XX-##)	ARTPACK AND WAYFINDING TAGS

**ARTPACK & WAYFINDING LEGEND**

MARK	DESCRIPTION
(AP-23)	WENDY'S LOCAL LOVE (CUSTOM STATE AND STAR LOCATOR)
(AP-24)	WINK WALL FRAMED GRAPHIC
(AP-25)	INTERIOR READER BOARD
(AP-26)	CAUSE PAINTING AND PLAQUE (3 VERSIONS)
(AP-30)	WELCOME WALL ART
(NP-S)	NUTRITION POSTER
(WF-20)	TACTILE EXIT SIGN
(WF-21)	HAND WASHING SIGN
(WF-22)	FAMILY RESTROOM SIGN
(WF-22A)	FAMILY RESTROOM SIGN ACCESSIBLE
(WF-23)	MEN'S ROOM SIGN
(WF-23A)	MEN'S ROOM SIGN ACCESSIBLE
(WF-25)	WOMEN'S ROOM SIGN
(WF-25A)	WOMEN'S ROOM SIGN ACCESSIBLE
(WF-27)	WOMEN'S ROOM SIGN
(WF-27A)	WOMEN'S ROOM SIGN ACCESSIBLE
(WF-31)	EMPLOYEE ONLY
(WF-32)	NOT AN ENTRANCE

REFER TO RESPONSIBILITY SCHEDULE FOR ARTPACK INFORMATION

**GENERAL NOTES**

- GENERAL NOTES**
- G.G. SHALL COORDINATE REQUIREMENTS OF MILLWORK, SPECIALTIES, EQUIPMENT, AND FURNISHINGS WITH OWNER PRIOR TO START OF WORK.
  - ELECTRICAL & PLUMBING REQUIREMENTS FOR THE INSTALLATION OF MILLWORK, SPECIALTIES, EQUIPMENT, AND FURNISHINGS IS THE RESPONSIBILITY OF THE G.G.
  - EQUIPMENT LISTED IS TO BE FURNISHED BY THE KITCHEN EQUIPMENT DISTRIBUTOR UNLESS NOTED OTHERWISE.
  - KITCHEN EQUIPMENT DISTRIBUTOR PROVIDES LABOR FOR UNCRATING, ASSEMBLY AND SETTING OF EQUIPMENT.
  - KITCHEN EQUIPMENT DISTRIBUTOR WILL SUPPLY CRITICAL DIMENSIONS, PLUMBING AND ELECTRICAL SPECIFICATIONS FOR EQUIPMENT SUPPLIED BY THE KITCHEN EQUIPMENT SUPPLIER.
  - ELECTRICAL AND PLUMBING CONTRACTOR TO MAKE FINAL CONNECTION TO EQUIPMENT
  - SEE INTERIOR ELEVATIONS FOR ARTPACK GRAPHIC LOCATIONS.
  - SIGNAGE TO BE SUBMITTED UNDER SEPARATE PERMIT.
  - THE GENERAL CONTRACTOR SHALL PROVIDE A CONTINGENCY BID FOR WORK IN THE BACK OF HOUSE KITCHEN AREA BEYOND THE SCOPE OF THIS REMODEL SHOWN ON THESE DOCUMENTS. COORDINATE ANY ALL WORK BID PROPOSED, OR REQUIRED WITH THE OWNER'S CONSTRUCTION REPRESENTATIVE PRIOR TO PURCHASING OR BEGINNING ANY WORK BEYOND THE LIMITED SCOPE SHOWN ON THESE CONSTRUCTION DOCUMENTS.
  - THE CONTRACTOR SHALL PROVIDE AND INSTALL SOLID WOOD BLOCKING FOR ALL MOUNTED ITEMS, SIGNAGE, EQUIPMENT, MILLWORK, ETC. COORDINATE LOCATIONS WITH OWNER'S CONSTRUCTION REPRESENTATIVE AS NECESSARY.
  - EXISTING EQUIPMENT TO REMAIN UNLESS NOTED OTHERWISE.

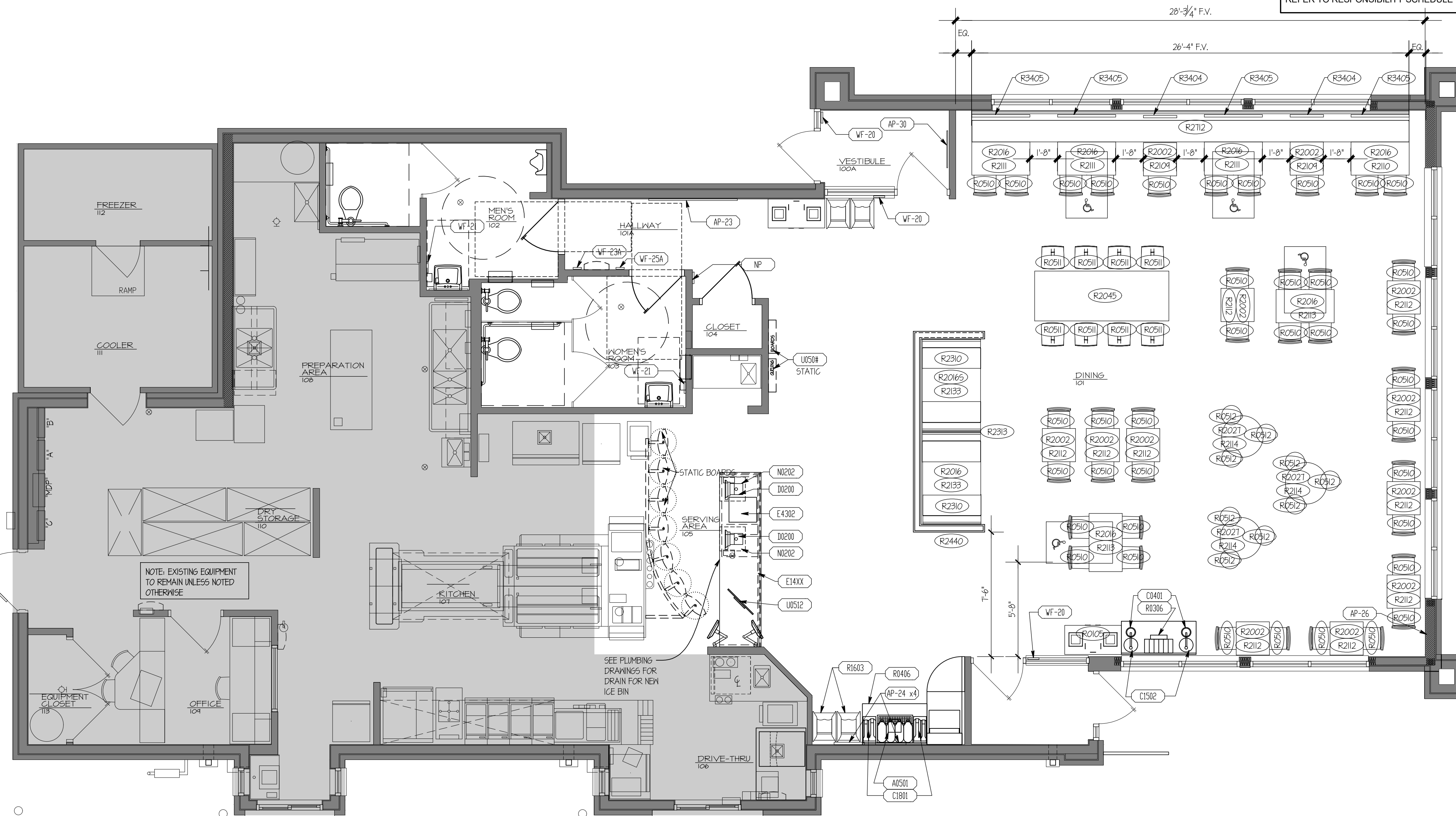
**ATTENTION ALL BIDDERS**  
 REFER TO WENDY'S APPROVED CONSOLIDATOR - HJC TO OBTAIN PREFERRED BUILDING MATERIAL PRICING, NATIONAL ACCOUNT CONTACTS AND PHONE NUMBERS PROVIDED FOR REFERENCE  
**DESIGNER NOTES**

SITE NUMBER:	09718
BUILDING TYPE:	E2000
ASSET TYPE:	FREESTANDING
CLASSIFICATION:	REFRESH LT
OWNER:	WEND AMERICAN GROUP
BASE VERSION:	2020 SUMMER
UPGRADE CLASSIFICATION:	N/A
PROJECT YEAR:	2021
DESIGN TYPE:	(2.0) UM BRIGHT
DRAWING RELEASE:	SUMMER 2020

CONTRACTOR SHALL VERIFY ALL DIMENSIONS AT THE JOB SITE AND NOTIFY THE ARCHITECTS OF ANY DIMENSIONAL ERRORS, OMISSIONS OR DISCREPANCIES BEFORE BEGINNING OR FABRICATING ANY WORK  
 DO NOT SCALE DRAWINGS

**Marc W Brundige, Architect**  
 Linear Architecture LLC  
 4436 Harvest Hill Rd.  
 Dallas, TX 75244  
 PHONE: 469-299-7056

PROJECT TYPE:	E2000
	REFRESH LT



MARK	QTY.	DESCRIPTION OF EQUIPMENT	REMARKS	FURNISHED BY	INSTALLED BY
A0105		BEVERAGE SYSTEM, PUW - FREESTYLE		KED	KED
A0202		BEVERAGE SYSTEM SELF-SERVE DINING ROOM (FREESTYLE)	EXTERIOR COLOR: SILVER (FOR FREESTYLE)	0	0
A0501		ICED TEA DISPENSER-NARROW OVAL		KED	KED
A0502		ICED TEA DISPENSER-ROUNDED FRONT (3 GALLON)		KED	KED
C0401		NAPKIN DISPENSER		KED	KED
C1502		KETCHUP PUMP		KED	KED
C1801		LID/STRAW DISPENSER		KED	KED
D0200		POS TERMINAL		0	0
D1701		COPS SCREEN		KED	KED
D1702		RUNNER SCREEN			
D1703		CEILING MOUNTED PREMIUM BEVERAGE DISPLAY			
D3002		KIOSK (UM)		0	0
E14XX		FRONT COUNTER		KED	KED
E4302		BAKERY CASE		KED	KED
G1402		CHASE @ FREESTYLE		KED	KED
N0202		CASH DROP BOX		KED	KED
QF0222		ICE MACHINE - DINING ROOM W/ REMOTE CONDENSING UNIT - DINING ROOM (ROOF)	# KITCHEN EQUIPMENT SUPPLIER TO VERIFY ACTUAL EQUIPMENT MODEL. FINISH TO BE USED *QUANTITY WILL VARY DEPENDING ON EXACT BEVERAGE SYSTEM CONFIGURATION	KED	KED
R0105		TRASH RECEPTACLE (2 BIN ENCLOSURE)		KED	KED
R0106		TRASH RECEPTACLE (3-STREAM - CANADA)		KED	KED
R0302		CONDIMENT STAND (w/ DRAIN)		KED	KED
R0510		CHAIR - STANDARD HEIGHT		KED	KED
R0511		CHAIR - BAR HEIGHT		KED	KED
R0512		STOOL 24" HIGH		KED	KED
R1603		HIGH CHAIRS		KED	KED
R1705		BOOSTER CHAIR		KED	KED
R2002		TABLE TOP: 24" X 24"		KED	KED
R2016		TABLE TOP: 24" X 42"		KED	KED
R2016S		TABLE TOP: 24" X 42" - STENCIL		KED	KED
R2027		TABLE TOP: 30" DIAMETER		KED	KED
R2043		FAMILY TABLE TOP: 30" X 66" (6 SEAT)		KED	KED
R2044		FAMILY TABLE TOP: 24" X 62" (6 SEAT)		KED	KED
R2045		COMMUNITY W-TABLE (FREESTANDING, 8 SEAT, 96" LONG)		KED	KED
R2046		COMMUNITY W-TABLE (CANTILEVERED, 8 SEAT, 96" LONG)		KED	KED
R2047		COMMUNITY W-TABLE (FREESTANDING, 10 SEAT, 120" LONG)		KED	KED
R2048		COMMUNITY W-TABLE (CANTILEVERED, 10 SEAT, 120" LONG)		KED	KED
R2109		TABLE BASE: 2-TOP - FIXED		KED	KED
R2110		TABLE BASE: 4-TOP - FIXED		KED	KED
R2111		TABLE BASE: 4-TOP ACCESSIBLE - FIXED		KED	KED
R2112		TABLE BASE: 22" X-BASE - FREE STANDING		KED	KED
R2113		TABLE BASE: 22" T-BASE (ACCESSIBLE) - FREE STANDING	2 BASES REQUIRED PER TABLE	KED	KED
R2114		TABLE BASE: 22" X-BASE (COUNTER HGT 34" - FREE STANDING)		KED	KED
R2133		CANTILEVER TABLE BRACKET (4-TOP)		KED	KED
R2310		42" SINGLE BOOTH - STANDARD (WOOD)		KED	KED
R2313		42" DOUBLE BOOTH - STANDARD (WOOD)		KED	KED
R2439		LOW WALL AT "V" TABLE"		KED	KED
R2440		U WALL AT BOOTHS		KED	KED
R2702		BENCH 15'-10"		KED	KED
R2712		BENCH 26'-4"		KED	KED
R2713		BENCH 24'-6"		KED	KED
R3310		KIOSK LEDGE (UM: 3 STATIONS) - 89"		0	0
R3404		SEAT CUSHION 24" WIDE		0	0
R3405		SEAT CUSHION 42" WIDE		0	0
U0510		BACKLIT STATIC MENU BOARDS	OWNER TO VERIFY ACTUAL EQUIPMENT MODEL TO BE USED	0	0
U0511		BACKLIT STATIC REVIEW BOARDS	OWNER TO VERIFY ACTUAL EQUIPMENT MODEL TO BE USED	0	0

O = OWNER GC = GENERAL CONTRACTOR KED = KITCHEN EQUIPMENT DISTRIBUTOR

**Wendy's**  
 # 09718 (FLYNN # 6060)  
 10989 NO TOWN CENTER BLVD  
 HIGHLAND, UT 84003

REV.	DATE	DESCRIPTION

ISSUE DATE: 06/XX/2021  
 PROJECT NUMBER: 21-41  
 DRAWN BY:  
 CHECKED BY:



SHEET NAME  
**EQUIPMENT PLAN AND SCHEDULE**

SHEET NUMBER  
**EQ1.1**