

**CONTRACT ADDENDUM #02**

**date:** March 22, 2021  
**project:** Harmony Place Park  
**by:** Design West Architects  
**subject:** Added construction document information

The Work shall be carried out in accordance with the following supplemental instructions issued in accordance with the Contract Documents. Prior to proceeding in accordance with these instructions, indicate your acceptance of these instructions for minor change to the work as consistent with the Contract Documents and return a copy to the Architect.

**Items:**

- Replace sheet A-101 with attached, see addendum clouds.
- Replace sheet P-101 with attached.
- See attached cut sheet for specific water heater to be located in the utility room instead of the restroom as shown. Exact placement in utility room to be coordinated with Contractor.
- Replace irrigation controller on sheet L-200, L-201 & L-202 with WTOXR-C-H2O48-CWM-AX

The following products and manufacturers are approved in name only and shall meet all the requirements of the contract documents.

<u>Product</u>	<u>Manufacturer</u>	
Drinking Fountain	Murdock	Approved
Electric Water Heater	Eemax	Approved
Urinals & Water Closets	MetCraft	Approved

Attachments: A-101, P-101

Dustin Hislop                      3.22.2021

ISSUED BY                      Date  
 Architect

ACCEPTED BY                      Date  
 Contractor

**GENERAL NOTES**

- LEGAL:** THE CONSTRUCTION DOCUMENTS FOR THIS PROJECT ARE COMPOSED OF SETS OF DRAWINGS AND SPECIFICATIONS, AND THEREFORE SHALL BE USED AND MAINTAINED IN THEIR ENTIRETY. ANY CONTRACTOR, SUBCONTRACTOR, VENDOR OR PARTY PARTICIPATING IN OR BIDDING ON THIS PROJECT SHALL BE EXPECTED TO PERFORM DUE DILIGENCE TO ENSURE THEIR BID, WORK PERFORMED, AND MATERIALS PROVIDED CONFORMS TO THE INFORMATION PROVIDED WITHIN ANY AND ALL SHEETS OF DRAWINGS AND SPECIFICATIONS, INCLUDING, BUT NOT LIMITED TO, ANY SUBSEQUENT ADDENDA OR CLARIFICATIONS THAT MAY BE ISSUED RELEVANT TO THEIR SCOPE OF WORK. PROJECT SCOPE MAY BE DEFINED WITHIN SPECIFICATIONS AND/OR DRAWINGS.  
 ADDITIONALLY, DRAWINGS MAY NOT BE RE-SCALED WHEN PRINTED. WRITTEN DIMENSIONS SHALL HAVE PRECEDENCE, AND LARGER SCALE DRAWINGS SHALL HAVE PRECEDENCE OVER SMALLER SCALE DRAWINGS.  
 ANY DEVIATION FROM OR CONFLICT WITHIN THE DRAWINGS AND/OR SPECIFICATIONS, MUST BE SUBMITTED VIA REQUEST FOR INFORMATION (RFI) AND RESPONDED TO BY THE ARCHITECT BEFORE CONTINUING THAT PORTION OF WORK.
- KEYNOTES:** THE FIRST TWO NUMBERS REPRESENT THE RELATED CSI MASTERFORMAT DIVISION. THE SECOND SET OF NUMBERS REPRESENTS AN IDENTIFYING MARK VALUE. NOT ALL VALUES MAY BE USED OR OCCUR IN THE DOCUMENT SET.  
 ADDITIONALLY, KEYNOTES RETAIN THEIR ASSIGNED VALUE UNIVERSALLY THROUGHOUT THE SET. THE KEYNOTES LISTED BELOW REPRESENT THE KEYNOTES FOUND AND UTILIZED ON THIS SHEET AND EACH LIST WILL DIFFER RESPECTIVE TO ITS SHEET. THEREFORE, BASED ON ACTUAL KEYNOTES UTILIZED ON A GIVEN SHEET OF DRAWINGS, GAPS IN THE SEQUENCING WILL OCCUR.
- CONTRACTOR SHALL BE FAMILIARIZED WITH THE LAY-OUT OF STRUCTURAL, MECHANICAL, AND ELECTRICAL DRAWINGS. ANY QUESTIONS SHALL BE SUBMITTED VIA REQUEST FOR INFORMATION (RFI).
- ALL INTERIOR DIMENSIONS ARE TO/FROM FACE OF STUD / MASONRY. ALL EXTERIOR DIMENSIONS ARE TO/FROM FACE OF GRID/FOUNDATION. DIMENSIONS MARKED "CLR" OR "CLF" ARE FROM FACE OF FINISH TO FACE OF FINISH AND SHALL BE MAINTAINED AND CANNOT BE HELD ADJUSTED WITHOUT PRIOR APPROVAL OF THE ARCHITECT.
- MIN CLEARANCE REQUIRED ON LATCH SIDE OF DOORS SHALL CONFORM TO ADA REQUIREMENTS  
 12" MIN PUSH SIDE  
 18" MIN PULL SIDE
- PROVIDE 5/8" PLYWOOD BACKING PANELS AT ELECTRICAL ROOMS AND TELEVISION LOCATIONS FOR EQUIPMENT MOUNTING.
- WALL TYPES SHOWN AS [SBA] ARE SHOWN ON SHEET A-101. FOR OTHER WALLS SEE BUILDING AND WALL SECTIONS.
- RESTROOMS MUST COMPLY WITH ADA REQUIREMENTS. SEE SHEET A-491 FOR MORE INFORMATION
- SLOPE ALL FLOORS TO FLOOR DRAINS (FD) U.N.O.
- INSTALL CONTROL JOINTS EVERY 20' MIN.
- CEILING HEIGHT IS B.O. FINISHED CEILING HEIGHT ABOVE FINISHED FLOOR
- MEASUREMENTS SPECIFYING "EO" = EQUAL LENGTH OR WIDTH TO FILL REMAINDER OF LENGTH REQUIRED
- CEILINGS WITH NO DIRECT MEASUREMENTS, ASSUME CEILING TO BE EQUALLY DISTANCED ON ALL SIDES OF ROOM
- FIXTURES IN OPEN TO STRUCTURE AREAS ARE DIMENSIONED FROM WALL OR CENTERLINE OF ROOM
- LIGHT FIXTURES WITH NO DIMENSIONS ARE TO BE CENTERED ON ROOM UNLESS OTHERWISE NOTED
- MECHANICAL, ELECTRICAL, SPRINKLER AND DRAIN CONTRACTORS TO COORDINATE PRIOR TO CONSTRUCTION TO AVOID CONFLICTS BETWEEN SYSTEMS
- FLOOR FINISH IN ALL AREAS TO BE POLISHED CONCRETE

- SIGNAGE:**
- FOR SIGN TYPE AND STYLE SEE SPECIFICATIONS
- 01 MENS RESTROOM SIGN
  - 02 WOMENS RESTROOM SIGN
  - 03 UNISEX RESTROOM SIGN

**EQUIPMENT LEGEND**

- A TOILET TISSUE DISPENSER  
OWNER FURNISHED, OWNER INSTALLED
- B GRAB BAR  
LENGTH INDICATED ON A-491 STANDARD MOUNTING HEIGHT
- C ELECTRIC HAND DRYER  
CONTRACTOR FURNISHED, CONTRACTOR INSTALLED
- D STAINLESS STEEL MIRROR  
2'W x 3'H
- E SOAP DISPENSER  
OWNER FURNISHED, OWNER INSTALLED
- F FEMINE NAPKIN DISPOSAL  
OWNER PROVIDED, OWNER INSTALLED
- H 24" X 24" MOP SINK
- J DIAPER CHANGING STATION
- K DRAIN PIPE PROTECTION
- L HEAVY DUTY METAL SHELVING (S) ADJUSTABLE  
SOLID SHELVES, 48" WIDE X 24" DEEP X 72" TALL,  
2000# CAPACITY; SHELF (MIN.)

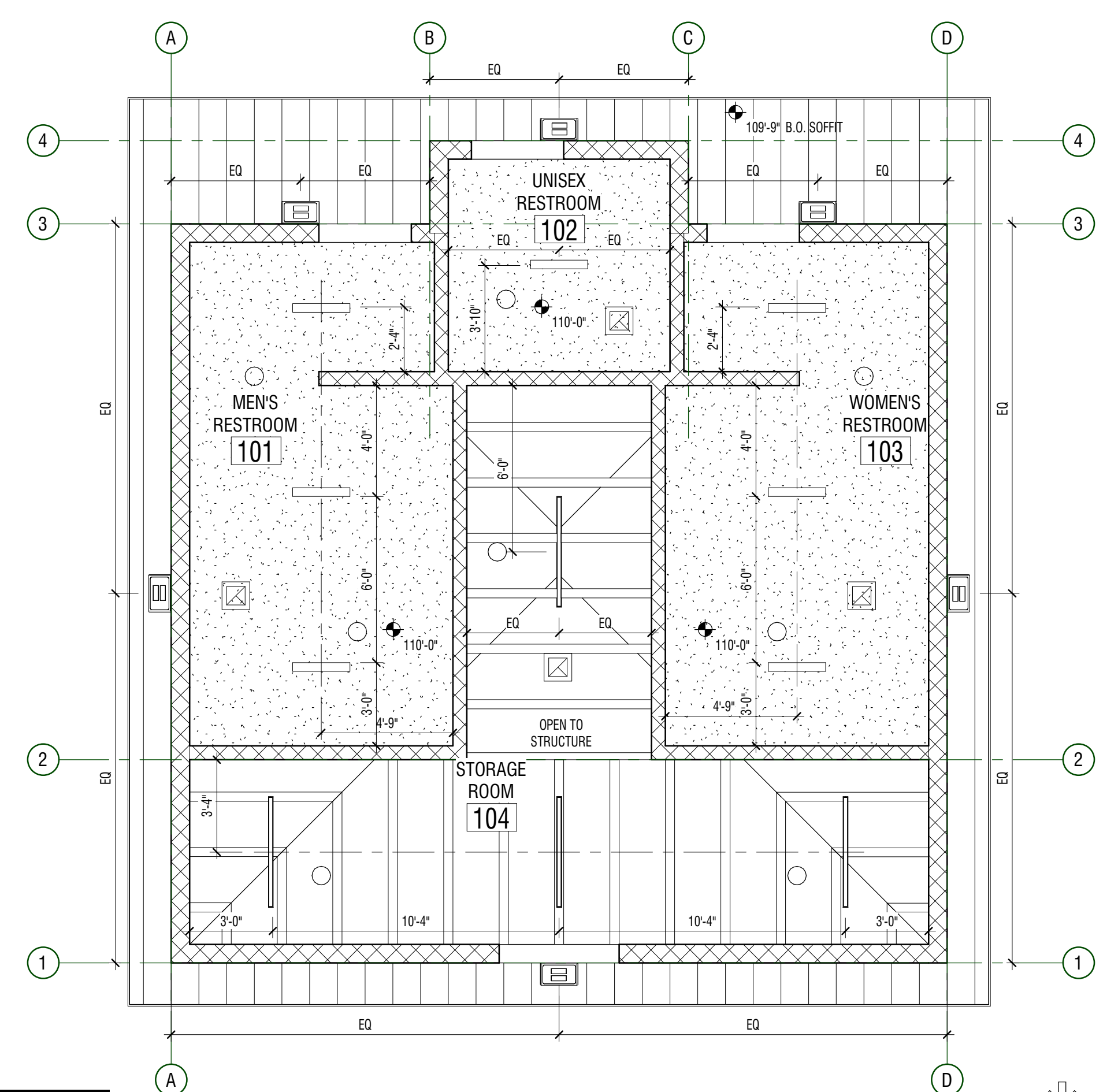
**LEGEND**

- MATERIALS**
- [Pattern] PAINTED GYPSUM BOARD CEILINGS TYPICAL, U.N.O. (COLOR: WHITE)
  - [Pattern] METAL VENTED SOFFIT, MCELROY METAL (COLOR: ALMOND)

- SYMBOLS**
- [Symbol] LIGHTING FIXTURES:  
SURFACE MOUNTED FIXTURES - SEE ELECTRICAL FOR SPECS  
EXTERIOR WALL SCONCE - SEE ELECTRICAL FOR SPECS

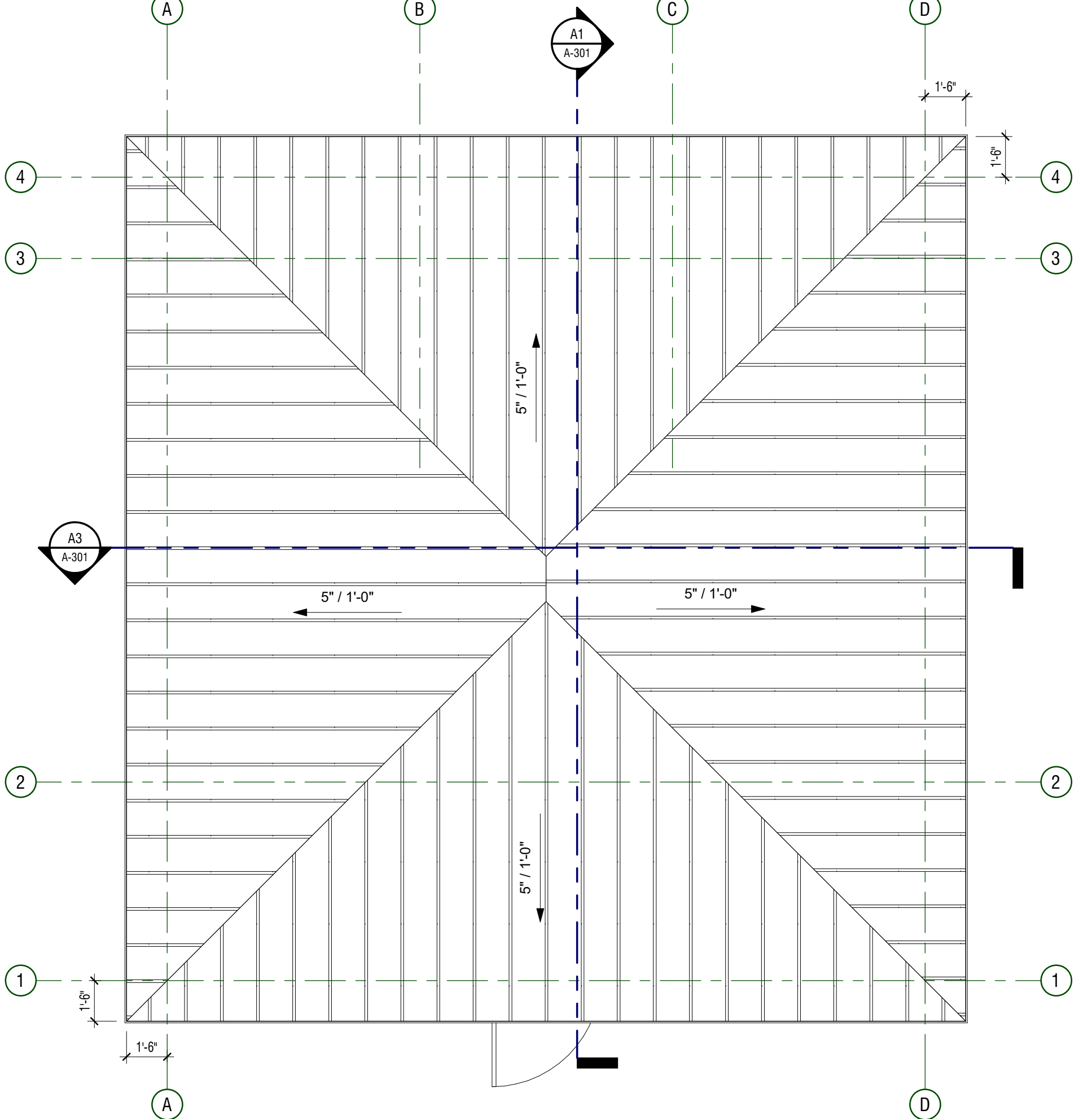
- SENSORS/SIGNS/ELEC./DATA:**
- [Symbol] OCCUPANCY SENSOR
- AIR GRILLES:**
- [Symbol] EXHAUST

MARK	ASSEMBLY	FIRE RATING
M6		N/A TESTING SOURCE: N/A
DESCRIPTION:	6" REINFORCEABLE CMU	STC RATING
N/A		N/A TESTING SOURCE: N/A



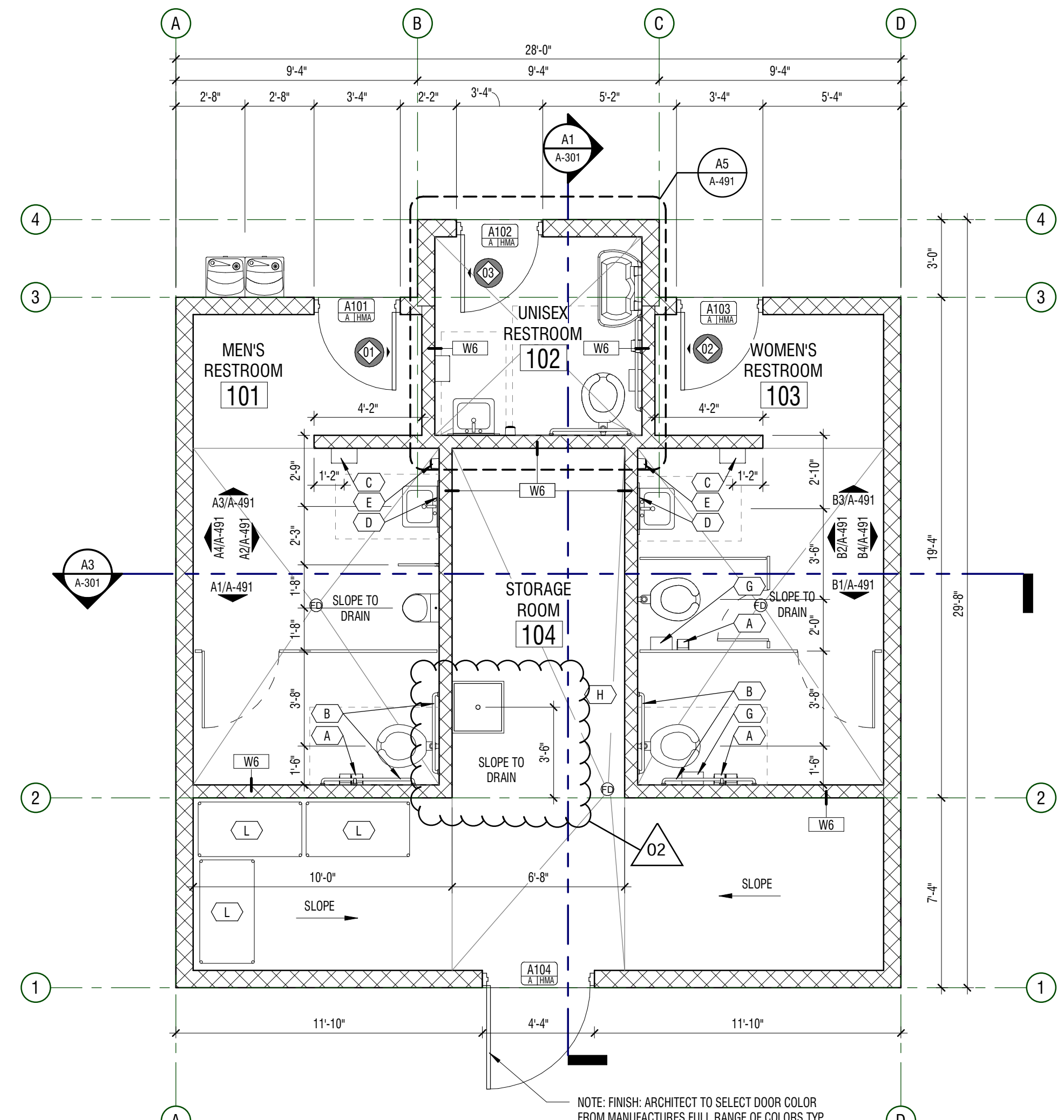
**C1 REFLECTED CEILING PLAN**

1/4" = 1'-0"



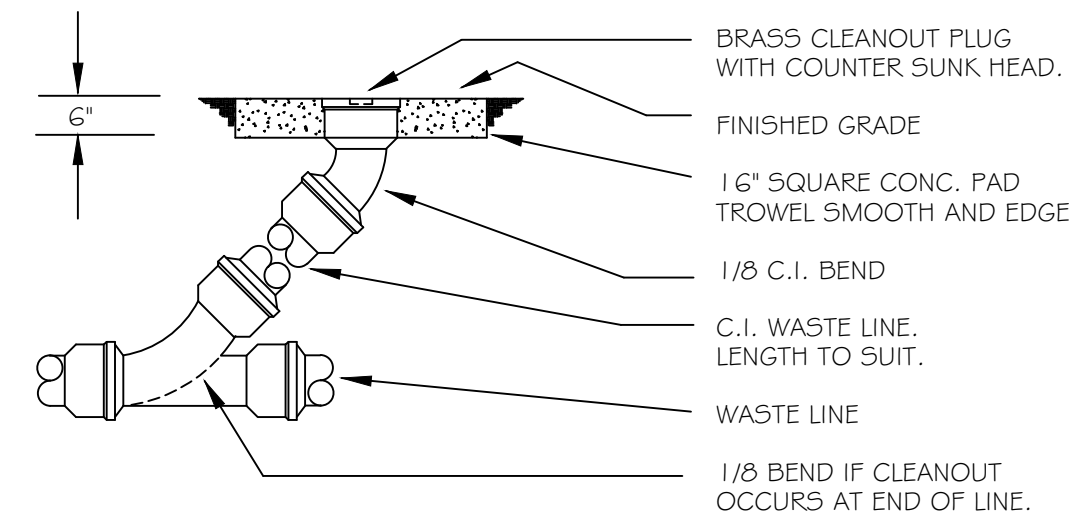
**A1 ROOF PLAN**

1/4" = 1'-0"

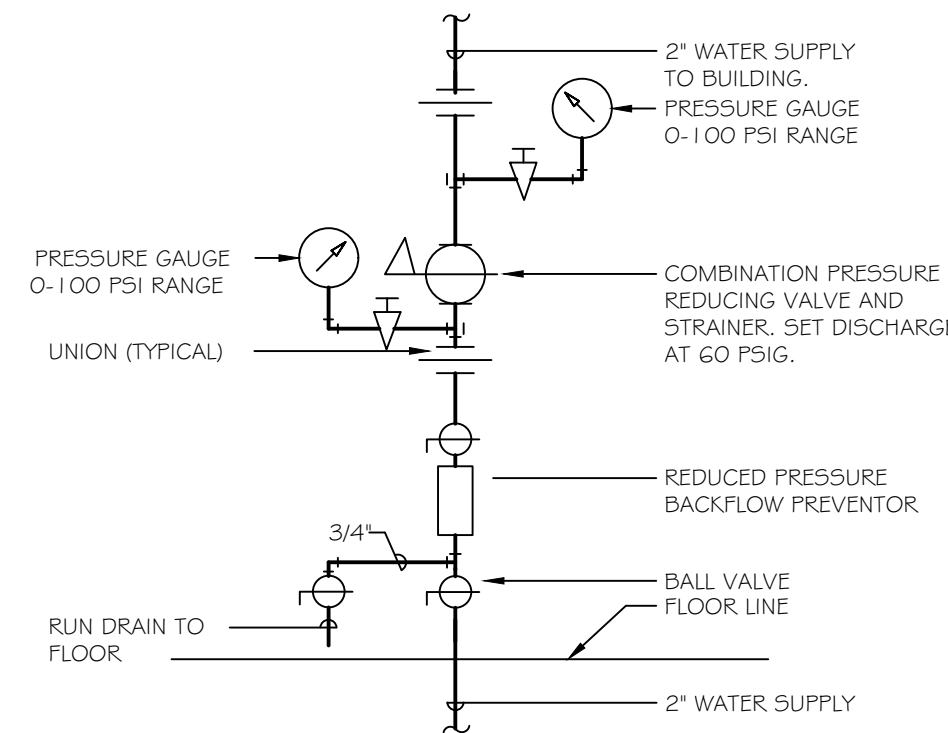


**A3 DIMENSION PLAN, ANNOTATION PLAN**

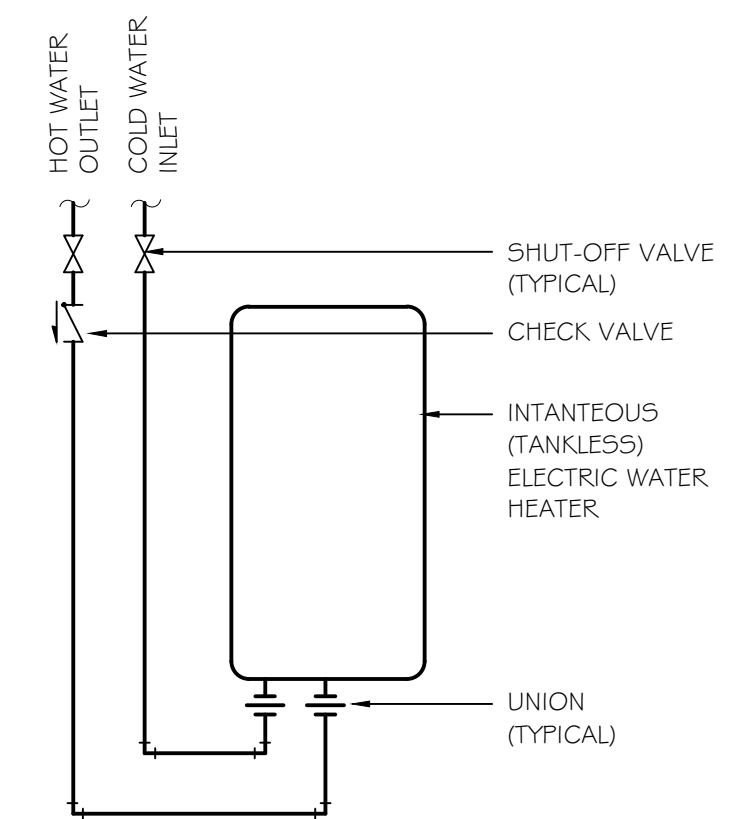
1/4" = 1'-0"



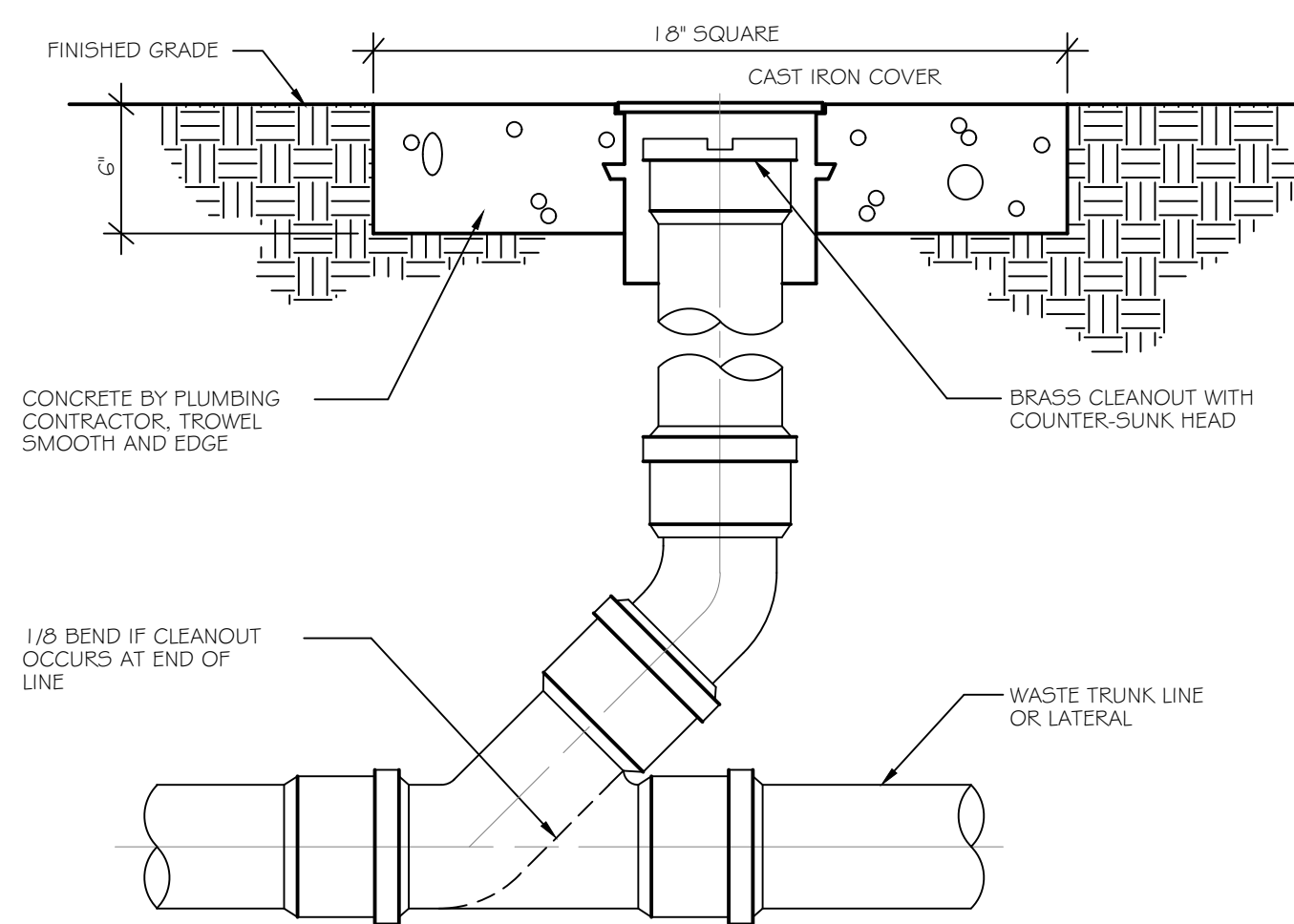
**FLOOR CLEANOUT DETAIL** 4  
NOT TO SCALE P-101



**VERTICAL WATER PRESSURE REDUCING STATION DETAIL** 3  
NOT TO SCALE P-101



**ELECTRIC WATER HEATER DETAIL** 2  
NOT TO SCALE P-101



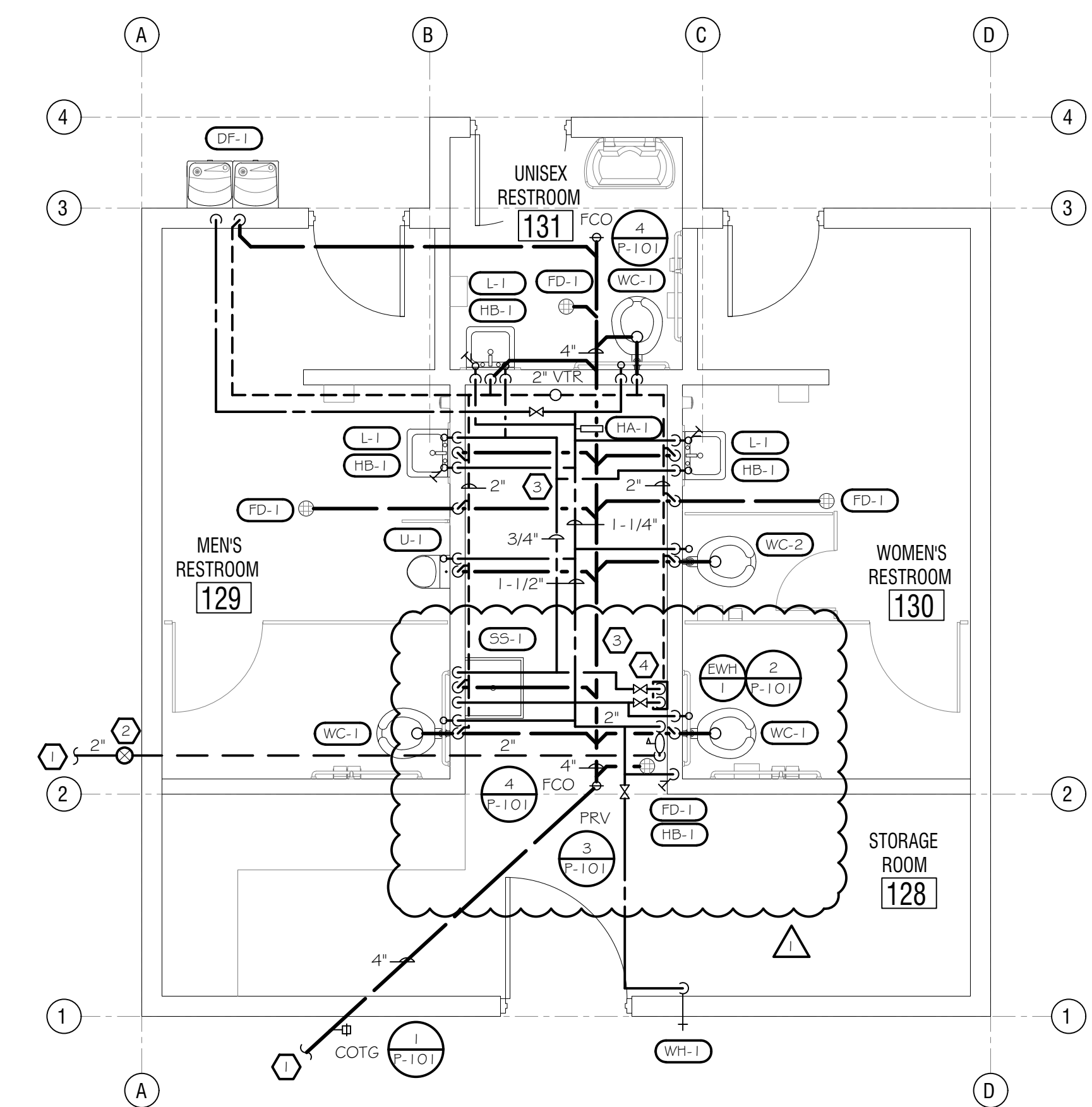
**CLEAN OUT TO GRADE DETAIL** 1  
NOT TO SCALE P-101

PLUMBING FIXTURE SCHEDULE									
FIX. NO.	FIXTURE	TYPE	DESCRIPTION	WASTE	TRAP	VENT	HW	CW	
DF-1	DRINKING FOUNTAIN	EXTERIOR DRINKING FOUNTAIN WITH BOTTLE FILLER	PLUMBINGSUPPLY.COM MODEL 10485WM-55 ADA OUTDOOR STAINLESS STEEL WALL MOUNTED DRINKING FOUNTAIN WITH WALL MOUNTED BOTTLE FILLER. STAINLESS STEEL PUSH BUTTONS AND FOUNTAIN HEADS. COLOR SELECTION: CHROME.	1 1/2"	1 1/4"	1"	-	1/2"	
FD-1	FLOOR DRAIN	TOILET ROOMS	SMITH FIGURE 201 O-BP CAST IRON BODY AND FLASHING COLLAR WITH PROTECTIVE CAP AND SQUARE NICKEL BRONZE ADJUSTABLE STRAINER HEAD WITH SECURED SQUARE HOLE GRATE. SQUARE FLOOR DRAIN TOP IN ALL TOILET ROOMS AND TILED LOCATIONS. ROUND FLOOR DRAIN TOP IN ALL CUSTODIAN 4 UTILITY AREAS.	2"	2"	1 1/2"	-	-	
HA-1	WATER HAMMER ARRESTOR	INLINE	JAY R. SMITH HYDROTROL WATER HAMMER ARRESTOR MODEL 5020, PDI SYMBOL "C", 1" THREADED NIPPLE, STAINLESS STEEL CONSTRUCTION, EXPANSION BELLOW TYPE.	-	-	-	-	1"	
HB-1	HOSE BIBB	WALL MOUNTED	ACORN HOSE VALVE MODEL 8121-CP WITH WHEEL HANDLE, VACUUM BREAKER, POLISHED CHROME FINISH, AND 3/4" HOSE CONNECTION.	-	-	-	-	1/2"	
L-1	ACCESSIBLE LAVATORY	ACCESSIBLE WALL HUNG RECTANGULAR	ACORN PENAL-WARE MODEL 105521RB WALL MOUNTED STAINLESS STEEL SECURITY LAVATORY WITH WALL SLEEVE AND ALL REQUIRED MOUNTING HARDWARE. PROVIDE LAVATORY VALVE FAUCET WITH PNEUMATIC PUSHBUTTON CONTROL, DECK SPOUT, AND ADJUSTABLE VALVE TIMING. (1)	1 1/2"	1 1/4"	1"	1/2"		
SS-1	SERVICE SINK	WALL MOUNTED SERVICE SINK	FIAT SERVICE SINK BASIN MODEL M53G24 (36"x24"x10") AND MODEL 030AA SERVICE SINK FAUCET WITH VACUUM BREAKER, PAIL HOOK, WALL BRACE, 3/4" MALE HOSE OUTLET, AND WALL HOOK. SERVICE SINK CONSTRUCTED OF SHEET MOLDING COMPOUND. NO SOAP OR CHEMICAL SYSTEM CONNECTION.	3"	3"	1 1/2"	1/2"	1/2"	
U-1	URINAL	ACCESSIBLE WALL HUNG	ACORN DURA-WARE 2158 WALL MOUNTED 304 STAINLESS STEEL ADA COMPLIANT URINAL. ALL REQUIRED MOUNTING HARDWARE SHALL BE SUPPLIED WITH FIXTURE. SLOAN ELECTRONICALLY ACTIVATED SOLENOID FLUSH VALVE WITH REMOTE TRANSFORMER.	2"	-	1 1/2"	-	3/4"	
WC-1	ACCESSIBLE WATER CLOSET	ACCESSIBLE WALL MOUNTED FLUSH VALVE	ACORN PENAL-WARE 169G SERIES WALL MOUNTED STAINLESS STEEL SECURITY WATER CLOSET WITH INTEGRAL SEAT AND WALL SLEEVE FOR BLOCK WALL; ALL REQUIRED MOUNTING HARDWARE SHALL BE SUPPLIED WITH FIXTURE; SLOAN ELECTRONICALLY ACTIVATED SOLENOID FLUSH VALVE WITH REMOTE TRANSFORMER.	3"	-	1 1/2"	-	1"	
WC-2	WATER CLOSET	WALL MOUNTED FLUSH VALVE	ACORN PENAL-WARE 169G SERIES WALL MOUNTED STAINLESS STEEL SECURITY WATER CLOSET WITH INTEGRAL SEAT AND WALL SLEEVE FOR BLOCK WALL; ALL REQUIRED MOUNTING HARDWARE SHALL BE SUPPLIED WITH FIXTURE; SLOAN ELECTRONICALLY ACTIVATED SOLENOID FLUSH VALVE WITH REMOTE TRANSFORMER.	3"	-	1 1/2"	-	1"	
WH-1	WALL HYDRANT	WALL MOUNTED	CHICAGO NONFREEZE AUTOMATIC DRAINING, ANTIBACKFLOW TYPE, KEY OPERATION WITH 3/4" HOSE CONNECTION.	-	-	-	-	1/2"	

REFERENCE NOTES	
①	SEE SITE UTILITY PLAN FOR CONTINUATION.
②	STOP & WASTE VALVE.
③	SLOPE DOMESTIC WATER PIPING FOR DRAIN DOWN.

ELECTRIC DOMESTIC HOT WATER HEATER SCHEDULE							
SYMBOL	MANUFACTURERS AND MODEL NO.	TANK CAPACITY GALLONS	INPUT KW	VOLTS/ PHASE/ CYCLE	RECOVERY RATE GPH (1)	WATER TEMP IN/OUT	COMMENTS
EWH	EMAX SP3512	0	3.5	120/1/60	-	50/120	(1)(2)

(1) INSTANTANEOUS TANKLESS ELECTRIC WATER HEATER.  
(2) ADJUSTABLE EXTERNAL TEMPERATURE CONTROL.



**PLUMBING PLAN**  
SCALE: 1/4" = 1' - 0"

MARK	DATE	DESCRIPTION
Z	3/19/21	MOVE SERVICE SINK

PROJECT #: 820200  
DRAWN BY: JT  
CHECKED BY: LM  
ISSUED: 2.25.2021





### Applications

- Handwashing
- Kitchen, bar, utility sink
- Point-of-use & fixed-flow fixture
- One (1) lavatory faucet, sensor faucet or metering faucet

### Performance Features

- Self-diagnostics with intelligent controls actively protect heater in installed environment
- InfoCue™ visible LED indicator communicates system status and heater operation feedback
- SafeStart™ technology engages upon start-up to help avoid dry-fire occurrence
- Low activation flow starting at 0.25 GPM turn on (model dependent)
- Mounts in any orientation for a flexible installation
- Compact size fits almost anywhere; suitable for ADA compliant facilities
- Only one cold water line needed for an easy installation
- No T&P relief valve needed (check local codes); Ready to go, right out-of-the-box
- Save water and time by installing unit at the point-of-use
- Integral 3/8" compression fittings; no soldering or sweat connections required
- Control system activates heater only on demand
- High temperature limit switch enables safe operation
- 5-year limited warranty on leaks, 1-year on parts

### Product Specifications

<b>Dimensions:</b>	10.75" H x 5.25" W x 3" D
<b>Product Weight: (model dependent)</b>	2.75 lb/3 lb
<b>Cover:</b>	ABS-UL 94 5VA
<b>Color:</b>	White
<b>Min. Dynamic Operating Pressure:</b>	30 PSI
<b>Max. Dynamic Operating Pressure:</b>	150 PSI
<b>Element:</b>	Replaceable nichrome cartridge insert
<b>Fittings:</b>	3/8" compression fittings
<b>UL listed file number:</b>	E86887

U.S. Patent Pending Technology

### Special Design Service

Inquiries for units for unique applications are welcome. Call our Technical Service department at **1-800-543-6163**.



Tested and certified by the Water Quality Association against NSF/ANSI 372 for lead free compliance.



**Note:** For optimum performance, mounting location should be within 2 feet of fixture.

### Suggested Specification

Tankless water heater shall be an Eemax model number SPEX\_\_\_\_\_.

Unit shall have ABS-UL 94 5VA rated cover. Unit shall allow mounting in any orientation. Element shall be replaceable cartridge insert. Element shall be iron-free, nickel-chrome material. Unit shall have replaceable filter in the inlet connector. Unit shall include an integrated flow meter to ensure accurate turn-on / turn-off flow rate. Heater shall be fitted with 3/8" compression fittings to eliminate the need for soldering. Maximum operating pressure of 150 PSI. Diagnostic features to include LED error/fault indicator. Heater shall employ technology that engages upon start-up to avoid dry-fire occurrence. Hot water storage tanks prohibited. Unit shall be Eemax or approved equal.

**NOTE:** Refer to rating chart for product information.

Specification options to be included with SPEX models:

- \_\_\_\_ **N4** NEMA 4 steel cabinet with powder coat finish
- \_\_\_\_ **N4X** NEMA 4 stainless steel, corrosion-resistant cabinet

# FlowCo

Non-Thermostatic Heater Ideal for Handwashing And Other Fixed-Flow Applications

## Specifications

Tankless Electric Water Heater

MODEL NUMBER	KW	AMPS	RECOMMENDED WIRE SIZE (75° C/CL)	TURN ON (GPM)	TEMPERATURE RISE °F					
					0.3 GPM	0.5 GPM	0.75 GPM	1.0 GPM	1.5 GPM	2.0 GPM
<b>VOLTS 120</b>										
SPEX1812	1.8	15	14 AWG	0.2	41°	25°	16°	12°	8°	6°
C SPEX1812CA (Canadian model)	1.8	15	14 AWG	0.2	41°	25°	16°	12°	8°	6°
SPEX2412	2.4	20	14 AWG	0.25	55°	33°	22°	16°	11°	8°
C SPEX2412CA (Canadian model)	2.4	20	14 AWG	0.25	55°	33°	22°	16°	11°	8°
SPEX3012	3.0	25	12 AWG	0.25	68°	41°	27°	20°	14°	10°
C SPEX3012CA (Canadian model)	3.0	25	12 AWG	0.25	68°	41°	27°	20°	14°	10°
SPEX3512	3.5	29	10 AWG	0.3	80°	48°	32°	24°	16°	12°
C SPEX3512CA (Canadian model)	3.5	29	10 AWG	0.3	80°	48°	32°	24°	16°	12°
<b>VOLTS 208 Single Phase</b>										
SPEX3208	3.0	15	14 AWG	0.25	68°	41°	27°	20°	14°	10°
C SPEX3208CA (Canadian model)	3.0	15	14 AWG	0.25	68°	41°	27°	20°	14°	10°
SPEX4208	4.1	20	14 AWG	0.4	-	56°	37°	28°	19°	14°
C SPEX4208CA (Canadian model)	4.1	20	14 AWG	0.4	-	56°	37°	28°	19°	14°
SPEX8208	8.3	40	8 AWG	0.7	-	-	76°	57°	38°	28°
C SPEX8208CA (Canadian model)	8.3	40	8 AWG	0.7	-	-	76°	57°	38°	28°
<b>VOLTS 240*</b>										
SPEX35	3.5	15	14 AWG	0.3	80°	48°	32°	24°	16°	12°
SPEX35 (derated 208V performance)	2.6	13	14 AWG	0.3	59°	36°	24°	18°	12°	9°
C SPEX35CA (Canadian model)	3.5	15	14 AWG	0.3	80°	48°	32°	24°	16°	12°
SPEX48	4.8	20	14 AWG	0.4	-	66°	44°	33°	22°	16°
SPEX48 (derated 208V performance)	3.6	17	14 AWG	0.4	-	49°	33°	25°	16°	12°
C SPEX48CA (Canadian model)	4.8	20	14 AWG	0.4	-	66°	44°	33°	22°	16°
SPEX55	5.5	23	12 AWG	0.5	-	75°	50°	38°	25°	19°
SPEX55 (derated 208V performance)	4.1	20	12 AWG	0.5	-	56°	37°	28°	19°	14°
C SPEX55CA (Canadian model)	5.5	23	12 AWG	0.5	-	75°	50°	38°	25°	19°
SPEX65	6.5	27	10 AWG	0.7	-	-	59°	44°	30°	22°
SPEX65 (derated 208V performance)	4.8	23	10 AWG	0.7	-	-	44°	33°	22°	16°
C SPEX65CA (Canadian model)	6.5	27	10 AWG	0.7	-	-	59°	44°	30°	22°
SPEX75	7.5	32	10 AWG	0.7	-	-	68°	51°	34°	26°
SPEX75 (derated 208V performance)	5.6	27	10 AWG	0.7	-	-	51°	38°	25°	19°
C SPEX75CA (Canadian model)	7.5	32	10 AWG	0.7	-	-	68°	51°	34°	26°
SPEX95	9.5	40	8 AWG	0.8	-	-	65°	43°	32°	22°
SPEX95 (derated 208V performance)	5.6	34	8 AWG	0.8	-	-	38°	25°	19°	14°
C SPEX95CA (Canadian model)	9.5	40	8 AWG	0.8	-	-	65°	43°	32°	22°
<b>VOLTS 277 Single Phase</b>										
SPEX3277	3.0	11	14 AWG	0.25	68°	41°	27°	20°	14°	10°
C SPEX3277CA (Canadian model)	3.0	11	14 AWG	0.25	68°	41°	27°	20°	14°	10°
SPEX4277	4.1	15	14 AWG	0.4	-	56°	37°	28°	19°	14°
C SPEX4277CA (Canadian model)	4.1	15	14 AWG	0.4	-	56°	37°	28°	19°	14°
SPEX60	6.0	22	12 AWG	0.7	-	-	55°	41°	27°	20°
C SPEX60CA (Canadian model)	6.0	22	12 AWG	0.7	-	-	55°	41°	27°	20°
SPEX80	8.0	29	10 AWG	0.7	-	-	73°	55°	36°	27°
C SPEX80CA (Canadian model)	8.0	29	10 AWG	0.7	-	-	73°	55°	36°	27°
SPEX90	9.0	33	10 AWG	0.7	-	-	82°	61°	41°	31°
C SPEX90CA (Canadian model)	9.0	33	10 AWG	0.7	-	-	82°	61°	41°	31°
SPEX100	10.0	36	8 AWG	0.8	-	-	68°	46°	34°	22°
C SPEX100CA (Canadian model)	10.0	36	8 AWG	0.8	-	-	68°	46°	34°	22°

\* 240V units can be used on 208V single phase with 25% reduced temperature output. Please note per UL standards the rating plate and installation instructions will all be according to a 240V applied voltage. Check with local officials prior to derating the electrical infrastructure.

\*C indicates evaluation and compliance to either Underwriters Laboratories (UL) or Intertek (ETL) under CAN/CSA-C22.2 No. 64/No. 88.

